

## Panelmonteret stik kontakt

Varenr. 1362

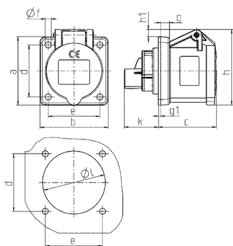


- skrueterminaler  
lige

## Tekniske data

|                            |              |
|----------------------------|--------------|
| Ampere                     | 16 A         |
| Poler                      | 3 p          |
| Volt                       | 110 V        |
| Klokposition               | 4 h          |
| Hertz                      | 50-60 Hz     |
| Forbindelsesteknologi      | Skruekontakt |
| Kontakt                    | standard     |
| Beskyttelsestype           | IP44         |
| Flange                     | 62x62 mm     |
| Fikseringshul              | 47x47 mm     |
| Vægt                       | 127 g        |
| Overensstemmelseserklæring | VDE, CQC     |

## Dimensioner



| Drawing<br>1 MB 259  | Amp.<br>Poles | 16  |     |     |
|--|---------------|-----|-----|-----|
|  |               | 3   | 4   | 5   |
| Dim. in mm   | a             | 62  | 72  | 72  |
|  | b             | 62  | 65  | 65  |
|  | c             | 54  | 54  | 54  |
|  | d             | 47  | 52  | 52  |
|  | e             | 47  | 52  | 52  |
|  | f             | 5,5 | 5,5 | 5,5 |
|  | g             | 8   | 8   | 8   |
|  | g1            | 2   | 2   | 2   |
|  | h             | 68  | 77  | 85  |
|  | h1            | 7   | 7   | 11  |
|  | k             | 32  | 32  | 32  |
|  | l             | 50  | 52  | 57  |
| Terminal for cond. cross<br>section (mm <sup>2</sup> ) min.-max. |               | 1,5 | 1,5 | 1,5 |
|  |               | -4  | -4  | -4  |