

Cepex Panelmonteret stik kontakt, perlevid

Varenr. 4120

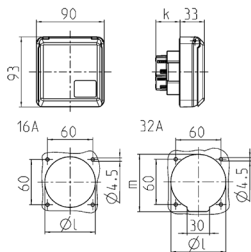


- skrueterminaler
- også egnet til installation i kabelrør og -kolonner
- opfylder DIN 18032-standarderne for returbold

Tekniske data

| | |
|----------------------------|---------------|
| Ampere | 32 A |
| Poler | 5 p |
| Volt | 400 V |
| Klokposition | 6 h |
| Hertz | 50-60 Hz |
| Beskyttelsestype | IP44 |
| Lukker | false |
| Vægt | 257 g |
| Overensstemmelseserklæring | VDE, EAC, CQC |

Dimensioner



| Drawing 1 MB 315 | Amp. Poles | 16 | | | 32 | | |
|---|---------------|-----|-----|-----|-----|-----|-----|
| | | 3 | 4 | 5 | 3 | 4 | 5 |
| Dim. in mm | k | 32 | 32 | 32 | 48 | 48 | 48 |
| | l | 50 | 60 | 67 | 65 | 65 | 73 |
| | m | - | - | - | 70 | 70 | 76 |
| Terminal for cond. cross section (mm ²) min.-max. | | 1.5 | 1.5 | 1.5 | 2.5 | 2.5 | 2.5 |
| | | -4 | -4 | -4 | -6 | -6 | -6 |