

Monteringsstik

Varenr. 432

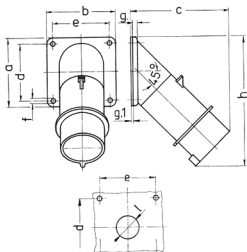


- skrueterminaler

Tekniske data

| | |
|----------------------------|--------------|
| Ampere | 16 A |
| Poler | 5 p |
| Volt | 400 V |
| Klokposition | 6 h |
| Hertz | 50-60 Hz |
| Forbindelsesteknologi | Skruekontakt |
| Kontakt | standard |
| Beskyttelsestype | IP44 |
| Vægt | 227 g |
| Overensstemmelseserklæring | VDE, EAC |

Dimensioner



| Drawing Z MB 39 | Amp. Poles | 16 | | 32 | |
|---|---------------|------|-----|-----|-----|
| | | 5 | 3 | 4 | 5 |
| Dim. in mm | a | 85 | 85 | 85 | 85 |
| | b | 85 | 85 | 85 | 85 |
| | c | 122 | 126 | 126 | 129 |
| | d | 70 | 70 | 70 | 70 |
| | e | 70 | 70 | 70 | 70 |
| | f | 6.2 | 6.2 | 6.2 | 6.2 |
| | g | 6 | 6 | 6 | 6 |
| | g.1 | 2 | 2 | 2 | 2 |
| | h | 161 | 163 | 163 | 170 |
| | l | 30 | 30 | 30 | 30 |
| Terminal for cond. cross section (mm ²) min.-max. | 1 | 2.5 | 2.5 | 2.5 | 2.5 |
| | | -2.5 | -6 | -6 | -6 |