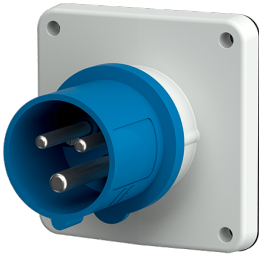


Monteringsstik

Varenr. 812

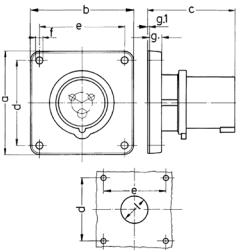


- skrueterminaler
- forniklede kontakter
- en holdetud til at holde stikforbindelsens låg skal leveres af kunden for at sikre en tilfredsstillende låsning

Tekniske data

| | |
|----------------------------|----------------------|
| Ampere | 16 A |
| Poler | 3 p |
| Volt | 230 V |
| Klokposition | 6 h |
| Hertz | 50-60 Hz |
| Forbindelsesteknologi | Skruekontakt |
| Kontakt | forniklede kontakter |
| Beskyttelsestype | IP44 |
| Vægt | 136 g |
| Overensstemmelseserklæring | EAC, CQC, VDE (ÜG) |

Dimensioner



| Drawing 2 MB 173/2 | Amp. Poles | 16 | | | 32 | | |
|-----------------------|---|------|------|------|------|------|------|
| | | 3 | 4 | 5 | 3 | 4 | 5 |
| Dim. in mm | a | 85.7 | 85.7 | 85.7 | 85.7 | 85.7 | 85.7 |
| | b | 85.7 | 85.7 | 85.7 | 85.7 | 85.7 | 85.7 |
| | c | 72 | 72 | 72 | 90 | 90 | 90 |
| | d | 69.5 | 69.5 | 69.5 | 69.5 | 69.5 | 69.5 |
| | e | 69.5 | 69.5 | 69.5 | 69.5 | 69.5 | 69.5 |
| | f | 5.5 | 5.5 | 5.5 | 5.5 | 5.5 | 5.5 |
| | g | 11 | 11 | 11 | 11 | 11 | 11 |
| | g.1 | 2 | 2 | 2 | 2 | 2 | 2 |
| | l | 32 | 36 | 36 | 47 | 47 | 47 |
| | Terminal for cond. cross section (mm ²) min.-max. | 1.5 | 1.5 | 1.5 | 2.5 | 2.5 | 2.5 |
| | | -4 | -4 | -4 | -10 | -10 | -10 |